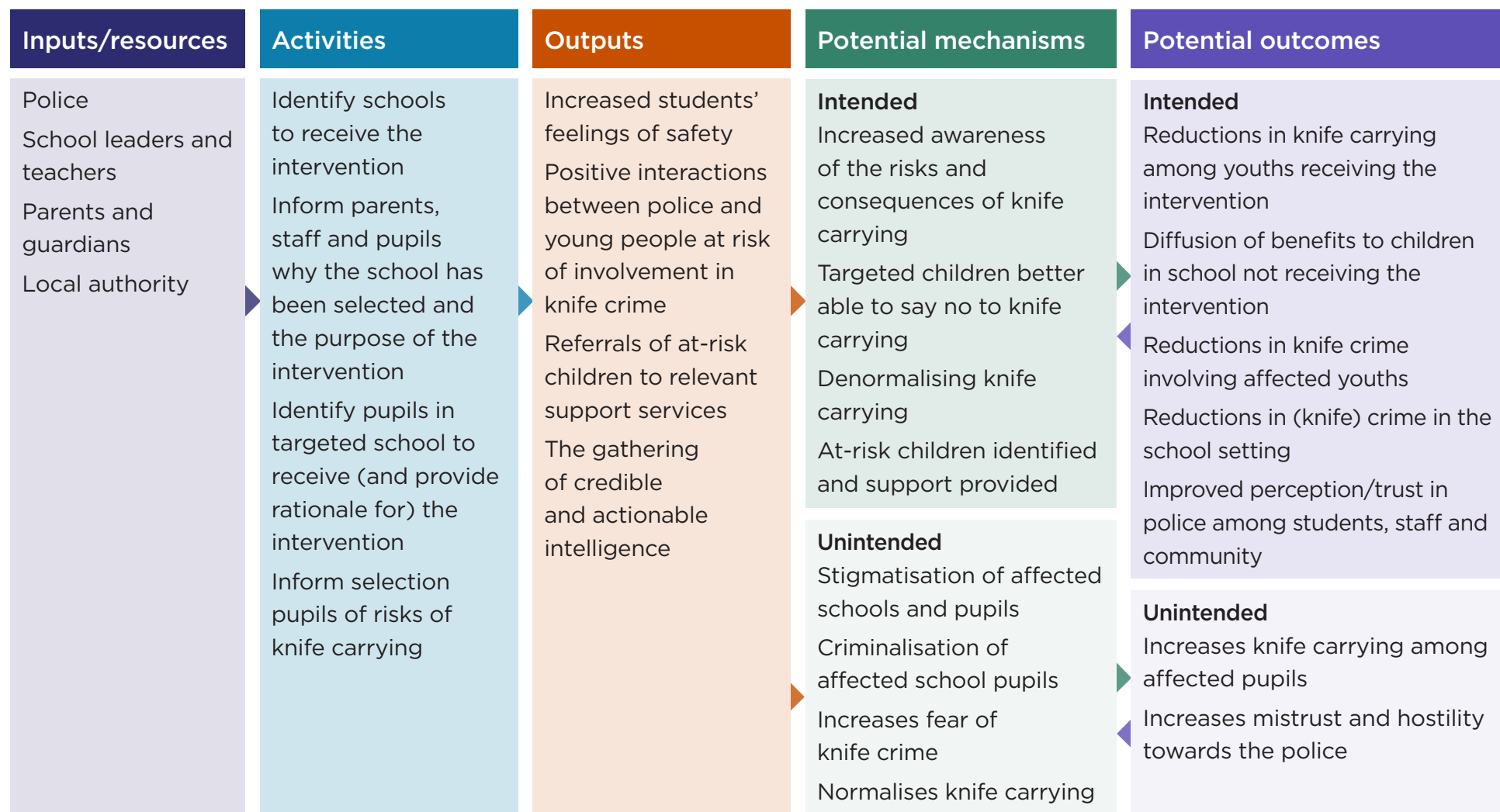


Knife crime problem solving: School-based intervention programmes



Context

- ✓ Rationale for police presence in schools made clear to affected staff, students and parents/guardians
- ✓ School involved in the design and delivery of the specific intervention
- ✓ Intervention delivered in a manner that is fair, just and equitable, in accordance with the principles of procedural justice
- ✓ Where relevant support services can be referred to for those children judged to be at risk of involvement in knife crime
- ✓ Where 'mission creep' can be minimised to avoid perceptions of criminalising young people